

## New recommendations

Date	Scrip	I-Direct Code	Action	Initiation Range	Target	Stoploss	Duration
04-Jun-24	Nifty (Current Month Future)	NIFTY	Buy	23260-23302	23360/23450	23178.00	Intraday
04-Jun-24	Hindustan Unilever	HINLEV	Buy	2358-2362	2390.0	2344.00	Intraday
04-Jun-24	AB Capital	ADICAP	Buy	230-233	236.0	228.70	Intraday
03-Jun-24	DLF	DLFLIM	Buy	850-868	930.0	828.00	14 Days
03-Jun-24	LIC	LIC	Buy	1055-1072	1145.0	1028.00	14 Days

Intraday & Positional recommendations for stocks are in Cash segment

## Open recommendations

Date	Scrip	I-Direct Code	Action	Initiation Range	Target	Stoploss	Duration
22-May-24	Tata Power	TATPOW	Buy	438-449	480.0	416.00	14 Days

June 4, 2024

## Gladiator Stocks

Scrip	Action
Union Bank	Buy
Petronet	Buy
JK Cement	Buy

Duration: 3 Months

[Click here to know more...](#)



Open Recommendations  
For Instant stock ideas:  
**SUBSCRIBE** to mobile notification  
on ICICIdirect Mobile app...

## Research Analysts

Dharmesh Shah  
dharmesh.shah@icicisecurities.com

Nitin Kunte  
nitin.kunte@icicisecurities.com

Ninad Tamhanekar, CMT  
ninad.tamhanekar@icicisecurities.com

Vinayak Parmar  
vinayak.parmar@icicisecurities.com

## Technical Outlook

### Day that was...

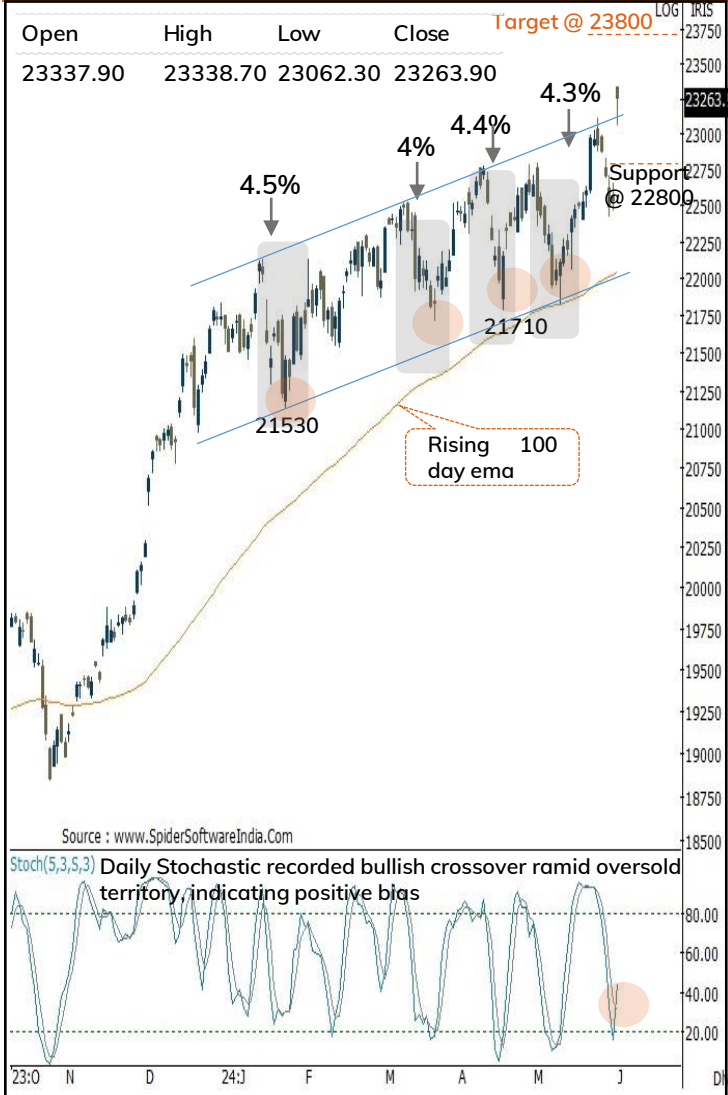
Equity benchmarks kick started the eventful week on a buoyant note tracking exit poll outcome favouring stable government at the center. As a result, Nifty recorded highest ever single day gain of 733 points to settle Monday's session at 23264. The market breadth remained in favour of advances with A/D ratio of 1.8:1 as broader market performed in tandem with the benchmark. Sectorally, all major indices ended in green led by financials, Oil & Gas, realty, metals

### Technical Outlook:

- The index started the week with a positive gap (22530-23338) and logged a fresh All-time high. After initial profit booking, index staged a gradual recovery to settle the session near days high. Consequently, daily price action resulted into small bear candle with long lower shadow carrying positive gap below it, highlighting acceleration of upward momentum on the breach of two weeks range breakout. In the process, India VIX declined 14% to settle the day at 21 as anxiety ahead of General Election outcome settles down
- In line with our view, Nifty resolved higher and now approaching towards our earmarked target of 23400 (as envisaged in Feb-24 special report "[Nifty @23400 : Pre-Election rally on the cards...](#)"). The across sector participation backed by improving market breadth makes us confident to reiterate our positive bias and expect Nifty to challenge our target of 23400 in coming sessions. In the process, 22800 would act as key support. Thus, any temporary breather should be capitalised as incremental buying opportunity
- Structurally, key point to highlight is that, since start of CY24, Nifty has not corrected for more than 5% on multiple occasions despite host of negative news. Consequently, Nifty has formed a strong higher base formation at 21800. For the upcoming week, key support is placed at 22800 being confluence of following observations:
  - A) 61.8% retracement of current up move (22417-23338)
  - B) As per change of polarity concept earlier breakout of 22800 would now act as key support

Source: Bloomberg, Spider, ICICI Direct Research

### Nifty Daily Candlestick Chart



### Domestic Indices

Indices	Close	1 Day Chg	% Chg
SENSEX Index	76468.78	2507.47	3.39
NIFTY Index	23263.90	733.20	3.25
Nifty Futures	23407.90	707.20	3.12
BSE500 Index	34449.55	1105.27	3.31
Midcap Index	44367.67	1514.98	3.54
Small cap Index	48232.30	968.64	2.05
GIFT Nifty	23500.00	92.10	0.39

\* Gift Nifty at 7:30 am

### Nifty Technical Picture

	Intraday	Short term
Trend	↑	↑
Support	23050-22800	22800
Resistance	23500-23700	23800
20 day EMA		22630
200 day EMA		21242

### Nifty Future Intraday Reco.

Action	Buy
Price Range	23260-23302
Target	23360/23450
Stoploss	23178.00

### Sectors in focus (Intraday) :

Positive: BFSI, FMCG, PSU, Pharma

## Technical Outlook

### Day that was:

The Nifty Bank index posted highest single day gain since 2021 to close at new life highs. PSU bank index rocketed 8.6% while private bank index gained 3.6%, both recording new highs. Nifty Bank index closed at 50980, up 1996 points or 4%

### Technical Outlook:

- The Bank Nifty index started session with a gap up reacting to exit poll outcome and in the process achieved target of 51000 levels in Mondays session leaving huge unfilled gap at (50092-48983) indicating prices breaking away from past one month consolidation (49700-47000) and acceleration of uptrend. In the coming session markets are likely to react further to actual Election outcome wherein sustaining above Mondays high of 51000 would lead index further north
- Structurally, index has exhibited strength with Mondays breakout. While minor retracements cannot be rule out, we expect index to maintain its uptrend and eventually head towards 52400 levels in the month of June, with strong support placed at 49500 levels
- Key observation is since January each rising segment has been around 7% each, while current upleg from 47000 mark is now bigger in magnitude with 9% gains in just three weeks indicating improving price structure
- PSU banking index has given a breakout from three month consolidation and expected to outperform

BankNifty Daily Candlestick Chart



## BankNifty

Indices	Close	Change	Change%
BankNifty	50979.95	1996.00	4.07

## BankNifty Technical Picture

	Intraday	Short term
Trend	↑	↑
Support	50500-50000	49500
Resistance	51450-52000	52400
20 day EMA		48710
200 day EMA		46349

## Bank Nifty Future Intraday Reco.

Action	Buy
Price Range	51050-51150
Target	51598
Stoploss	50790

# Hindustan Unilever(HINLEV)

Duration: Intraday

Action	Buy	Rec. Price	2358-2362	Target	2390.00	Stop loss	2344.00
--------	-----	------------	-----------	--------	---------	-----------	---------



Source: Spider Software, ICICI Direct Research

June 4, 2024

ICICI Securities Ltd. | Retail Equity Research

# AB Capital (ADICAP)

Duration: Intraday

Action	Buy	Rec. Price	231-232	Target	236.00	Stop loss	228.70
--------	-----	------------	---------	--------	--------	-----------	--------

## Daily Chart

Price sustaining above 10 day EMA suggest further upward momentum in coming sessions



Source : [www.SpiderSoftwareIndia.Com](http://www.SpiderSoftwareIndia.Com)

RSI(14,E,9)

RSI in buy mode

Source: Spider Software, ICICI Direct Research

June 4, 2024

ICICI Securities Ltd. | Retail Equity Research



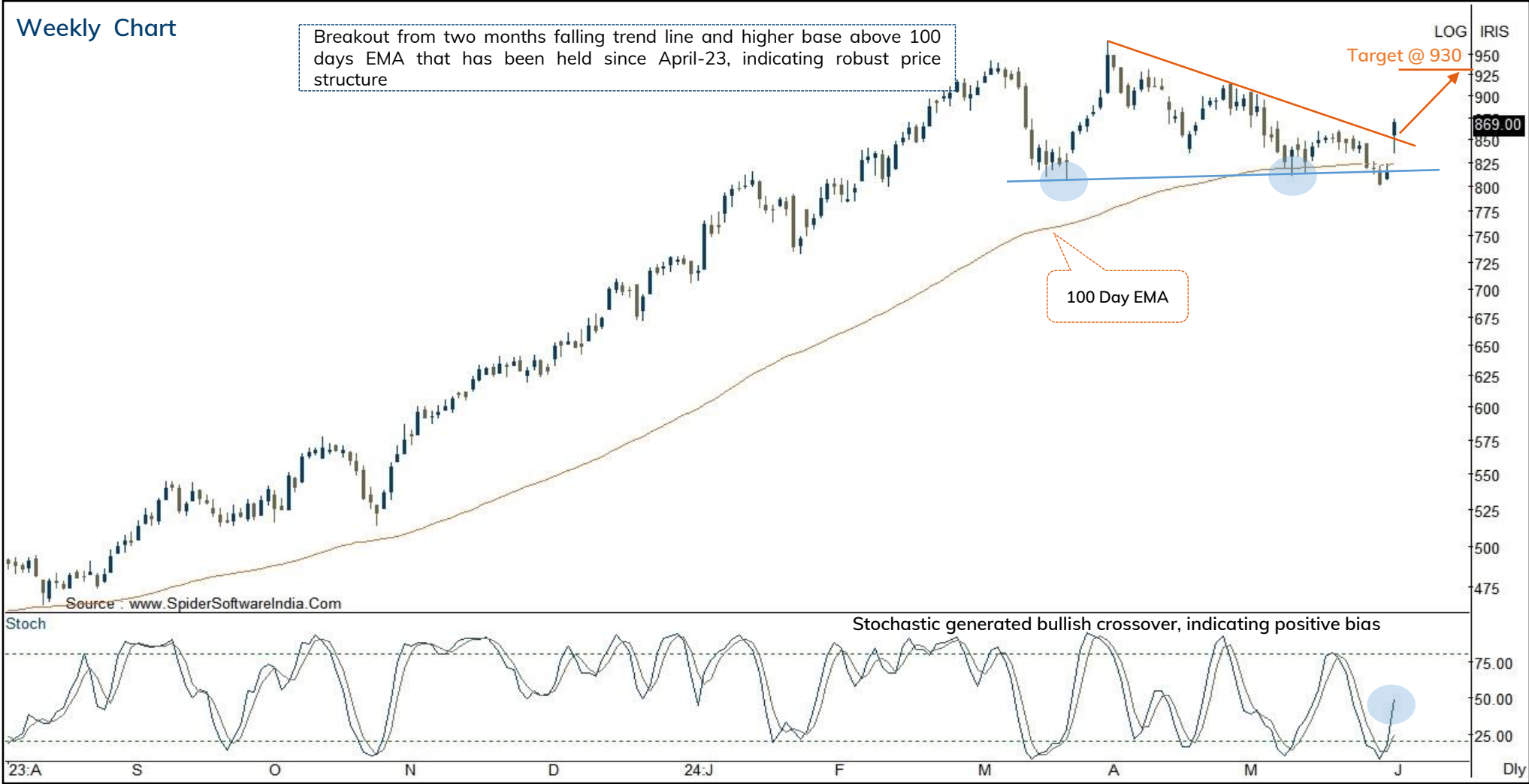
# DLF (DLFLIM)

Duration: 14 Days



Recommended on I-click to gain on 3<sup>rd</sup> June 2024 at 14:45

Rec. Price	850-868	Target	930	Stop loss	828	Upside	7%
------------	---------	--------	-----	-----------	-----	--------	----

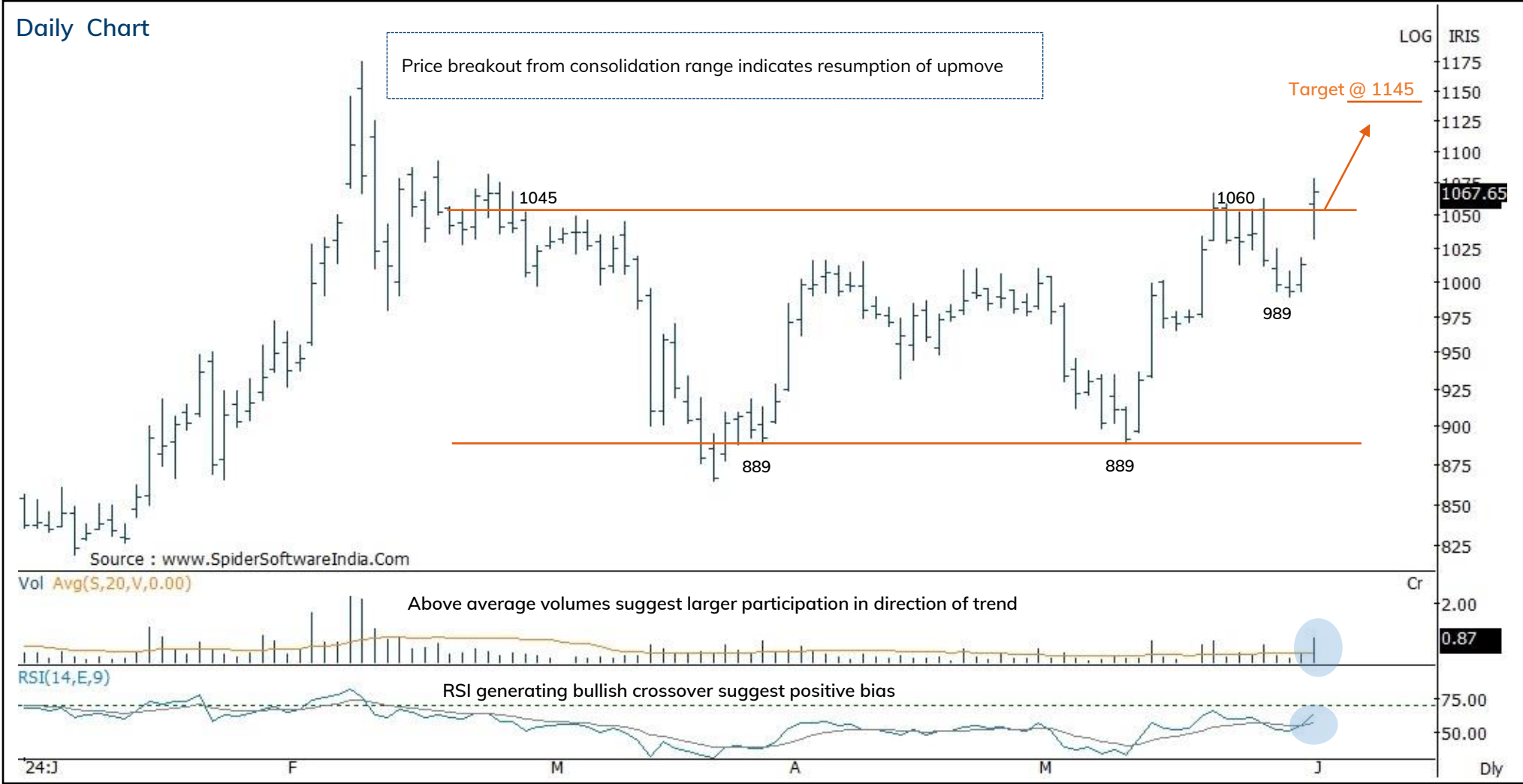


Source: Spider Software, ICICI Direct Research

June 4, 2024

ICICI Securities Ltd. | Retail Equity Research

Rec. Price	1055-1072	Target	1145.00	Stop loss	1028.00	Upside	7%
------------	-----------	--------	---------	-----------	---------	--------	----



Source: Spider Software, ICICI Direct Research

June 4, 2024

ICICI Securities Ltd. | Retail Equity Research

# Tata Power(TATPOW)

Duration: 14 Days

Recommended on I-click to gain on 22<sup>nd</sup> May 2024 at 11:01

Rec. Price	438-449	Target	480.00	Stop loss	416.00	Upside	8%
------------	---------	--------	--------	-----------	--------	--------	----



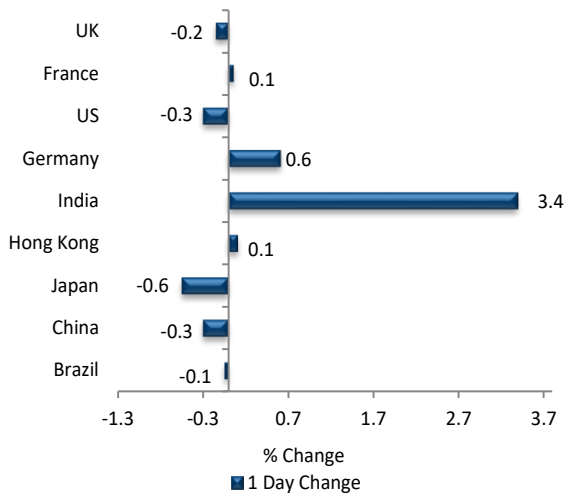
Source: Spider Software, ICICI Direct Research

June 4, 2024

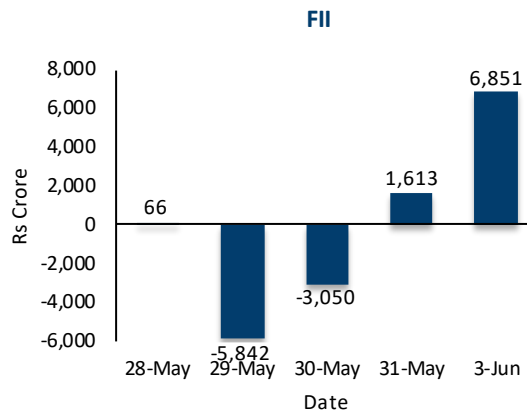
ICICI Securities Ltd. | Retail Equity Research



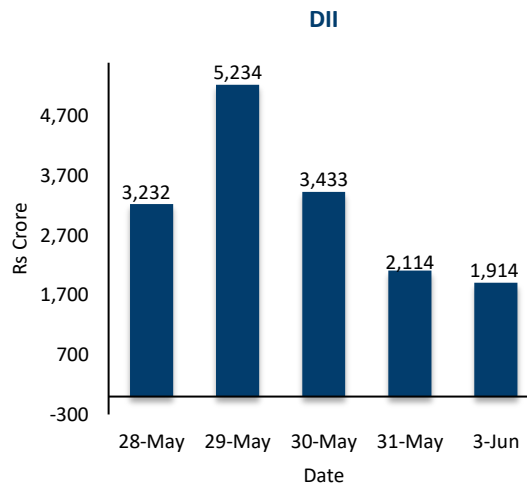
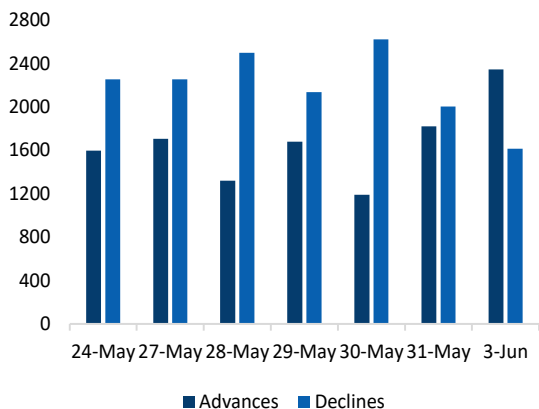
## Global Equity Market Performance



## Fund Flow activity of last 5 session(Provisional data)



## Advance Decline



Source: Bloomberg, Investing, BSE, NSE, ICICI Direct Research  
June 4, 2024

# Intraday Trend, Supports and Resistance (Cash)

Scrip Name	Trend	Close	S1	S2	S3	R1	R2	R3
NIFTY 50	Positive	23263.9	23105	22946	22829	23382	23498	23658
S&P BSE SENSEX INDEX	Positive	76468.78	75851	75235	74791	76912	77355	77972
NIFTY BANK	Positive	50979.95	50337	49694	49296	51377	51776	52418
NIFTY 50 FUTURES	Positive	23450	23126	22802	22443	23809	24168	24491
NIFTY BANK FUTURES	Positive	51475	50722	49970	49588	51856	52238	52990
AARTI INDUS LTD	Positive	625.25	614	603	591	637	649	660
ABB INDIA LTD	Positive	8728	8493	8259	8123	8863	8999	9233
ABBOTT INDIA LTD	Positive	25941.65	25728	25515	25229	26227	26513	26725
ABCAPITAL	Positive	229.55	228	224	221	234	238	241
ACC LTD	Positive	2682.8	2623	2564	2524	2723	2762	2822
ADANI ENTERPRISE	Positive	3645.25	3572	3500	3414	3730	3816	3888
ADANI PORTS AND	Positive	1583.95	1539	1494	1452	1625	1666	1711
ADITYA BIRLA FAS	Positive	292.8	289	284	278	300	306	310
ALKEM LABORATORI	Neutral	4822.1	4783	4745	4695	4871	4921	4959
AMBUJA CEMENTS	Positive	670.8	657	644	634	681	690	704
APOLLO HOSPITALS	Positive	5851.2	5770	5688	5564	5975	6100	6181
APOLLO TYRES LTD	Positive	476.65	470	464	460	481	486	492
ASHOK LEYLAND	Positive	236.5	232	228	225	239	242	246
ASIAN PAINTS LTD	Positive	2866.45	2834	2802	2744	2924	2982	3014
ASTRAL LTD	Positive	2146	2117	2088	2057	2177	2208	2238
ATUL LTD	Positive	5749.8	5652	5553	5461	5843	5935	6034
AU SMALL FINANCE	Positive	644.55	634	625	608	660	677	686
AUROBINDO PHARMA	Positive	1227.4	1212	1197	1188	1236	1245	1261
AXIS BANK LTD	Positive	1223.9	1198	1171	1149	1247	1269	1295
BAJAJ AUTO LTD	Positive	9335.45	9158	8980	8837	9479	9622	9801
BAJAJ FINANCE LT	Positive	6915.55	6835	6756	6680	6991	7068	7147
BAJAJ FINSERV LT	Positive	1575.8	1561	1545	1534	1588	1599	1614
BALCHI	Positive	391.1	383	376	370	396	402	408
BALKRISHNA INDS	Positive	3049.9	3013	2977	2914	3112	3175	3211
BANDHAN BANK LTD	Positive	195.05	192	189	187	197	199	203
BANK OF BARODA	Positive	296.95	282	268	260	305	314	328

Source: Bloomberg, ICICI Direct Research  
June 4, 2024

# Intraday Trend, Supports and Resistance (Cash)

Scrip Name	Trend	Close	S1	S2	S3	R1	R2	R3
BATA INDIA LTD	Neutral	1368.45	1353	1338	1315	1392	1414	1430
BERGER PAINTS	Positive	471.8	464	458	453	475	480	487
BHARAT ELECTRON	Positive	318.65	311	303	297	325	331	338
BHARAT FORGE CO	Positive	1608.25	1582	1555	1521	1643	1677	1704
BHARAT HEAVY ELE	Positive	311.45	307	301	294	320	327	333
BHARAT PETROL	Positive	666.15	649	633	614	684	703	720
BHARTI AIRTEL	Positive	1391.1	1378	1364	1342	1413	1434	1448
BIOCON LTD	Neutral	309.65	305	301	295	315	321	324
BIRLASOFT LTD	Positive	613.4	607	600	595	620	626	633
BOSCH LTD	Positive	29989.35	29672	29354	28843	30500	31012	31329
BRITANNIA INDS	Positive	5167.8	5118	5069	4978	5258	5349	5398
CAN FIN HOMES	Positive	752.15	739	726	716	762	772	785
CANARA BANK	Positive	128.25	125	121	119	132	133	138
CHAMBAL FERTILIS	Positive	407.1	399	390	384	414	420	429
CHOLAMANDALAM IN	Positive	1288.65	1269	1251	1238	1300	1313	1331
CIPLA LTD	Positive	1452.35	1437	1423	1400	1474	1497	1511
CITY UNION BANK	Positive	147.2	146	144	142	149	151	153
COAL INDIA LTD	Positive	512.35	503	493	481	524	537	546
COFORGE LTD	Positive	5016.6	4936	4857	4766	5106	5197	5276
COLGATE PALMOLIV	Positive	2687.15	2660	2633	2607	2714	2741	2767
CONTAINER CORP	Positive	1174.25	1126	1078	1051	1201	1228	1276
COROMANDEL INTER	Positive	1341.25	1314	1287	1270	1357	1374	1401
CROM GREAVES CON	Positive	395.65	390	385	379	401	407	413
CUMMINS INDIA	Positive	3712.25	3643	3575	3534	3752	3793	3861
DABUR INDIA LTD	Neutral	544.8	539	532	521	557	568	575
DALMIA BHARAT LT	Positive	1858	1812	1765	1730	1894	1929	1976
DEEPAK NITRITE	Positive	2244.65	2208	2171	2135	2281	2317	2355
DIVI LABS LTD	Positive	4321.9	4265	4207	4122	4407	4493	4550
DIXON TECHNOLOGI	Positive	9886	9633	9379	9221	10044	10203	10456
DLF LTD	Neutral	869.15	845	821	807	883	897	921
DR LAL PATHLABS	Positive	2674.15	2642	2611	2591	2693	2713	2744

Source: Bloomberg, ICICI Direct Research  
June 4, 2024

# Intraday Trend, Supports and Resistance (Cash)

Script Name	Trend	Close	S1	S2	S3	R1	R2	R3
DR REDDY'S LABS	Positive	5783.3	5728	5672	5567	5889	5994	6050
EICHER MOTORS	Neutral	4670.85	4608	4544	4448	4768	4864	4928
ESCORTS KUBOTA L	Positive	3890.35	3829	3768	3718	3940	3990	4051
EXIDE INDUS LTD	Positive	504.9	494	482	471	517	528	540
FED BANK LTD	Positive	164.35	163	162	160	166	168	170
GAIL INDIA LTD	Positive	230.8	217	203	195	239	247	261
GLENMARK PHARMA	Positive	1176.2	1153	1129	1106	1200	1223	1247
GMR AIRPORTS INF	Positive	88.3	87	86	85	89	90	91
GNFC	Positive	662.9	649	635	627	671	679	694
GODREJ CONSUMER	Positive	1306.5	1286	1267	1252	1320	1335	1354
GODREJ PROPRTIE	Positive	2964.75	2865	2764	2693	3037	3108	3209
GRANULES INDIA	Positive	441.1	426	412	403	450	458	473
GRASIM INDS LTD	Positive	2368.8	2353	2336	2310	2396	2422	2439
GUJARAT GAS LTD	Positive	569.45	557	545	535	579	589	600
HAVELLS INDIA	Positive	1879.3	1835	1791	1716	1953	2029	2072
HCL TECH LTD	Neutral	1314.45	1297	1281	1252	1342	1371	1387
HDFC ASSET MANAG	Positive	4090.2	3997	3905	3810	4184	4279	4371
HDFC BANK LTD	Positive	1572.2	1549	1525	1500	1598	1623	1647
HDFC LIFE INSURA	Positive	550.1	541	533	519	563	577	585
HERO MOTOCORP LT	Positive	5160.6	5106	5051	4947	5265	5369	5425
HINDALCO INDS	Positive	695.95	687	679	664	709	723	732
HINDUSTAN AERONA	Positive	5273.65	5142	5011	4860	5424	5575	5705
HINDUSTAN COPPER	Positive	370.5	361	351	343	379	387	398
HINDUSTAN PETRO	Positive	582.4	569	557	545	594	607	619
HINDUSTAN UNILEV	Positive	2355.9	2339	2320	2295	2382	2406	2425
IDFC	Positive	116.45	115	114	112	119	120	122
IDFC FIRST BANK	Positive	78.1	77	76	74	80	82	83
INDIA CEMENTS	Positive	215.65	209	203	198	220	225	231
INDIAMART INTERM	Positive	2445.05	2400	2355	2290	2510	2575	2620
INDIAN ENERGY EX	Positive	157.8	156	152	150	161	164	167
INDIAN HOTELS CO	Positive	576.5	570	562	555	584	591	599

Source: Bloomberg, ICICI Direct Research  
June 4, 2024

# Intraday Trend, Supports and Resistance (Cash)

Scrip Name	Trend	Close	S1	S2	S3	R1	R2	R3
INDIAN OIL CORP	Positive	175.3	170	165	161	178	181	186
INDIAN RAILWAY C	Positive	1054.25	1033	1012	986	1080	1106	1127
INDRAPRASTHA GAS	Positive	468.95	457	445	438	476	483	495
INDUS TOWERS LTD	Neutral	364	348	331	320	376	387	405
INDUSIND BANK	Positive	1529.7	1505	1482	1467	1544	1559	1582
INFO EDGE	Positive	5715.4	5566	5417	5156	5976	6237	6385
INFOSYS LTD	Positive	1405.9	1394	1381	1358	1430	1453	1466
INTERGLOBE AVIAT	Positive	4298.05	4244	4190	4150	4338	4378	4432
IPCA LABS LTD	Negative	1127.3	1110	1092	1059	1160	1192	1210
ITC LTD	Positive	430.35	427	425	421	433	437	440
JINDAL STEEL & P	Positive	1057.45	1044	1031	1013	1075	1093	1106
JK CEMENTS LTD	Positive	4025.95	3962	3899	3847	4078	4131	4193
JSW STEEL LTD	Positive	915.3	902	890	882	922	930	942
JUBILANT FOODWOR	Positive	497.8	490	482	470	509	520	528
KOTAK MAHINDRA	Positive	1718.05	1699	1680	1660	1738	1758	1777
L&T FINANCE LTD	Positive	159.7	158	155	154	162	163	166
L&T TECHNOLOGY S	Positive	4481.2	4427	4373	4279	4575	4669	4722
LARSEN & TOUBRO	Positive	3897.15	3826	3754	3707	3945	3992	4064
LAURUS LABS LTD	Neutral	427.35	421	414	409	432	436	443
LIC HOUSING FIN	Positive	680.95	661	639	627	694	707	728
LTIMINDTREE LTD	Neutral	4649.4	4585	4520	4400	4770	4890	4955
LUPIN LTD	Positive	1583.95	1564	1545	1513	1614	1645	1664
M&M FIN SERVICES	Positive	273.3	272	269	268	276	277	280
MAHANAGAR GAS LT	Positive	1378.6	1336	1293	1265	1406	1433	1477
MAHINDRA & MAHIN	Positive	2634	2586	2536	2502	2670	2704	2754
MANAPPURAM FINAN	Positive	173.45	172	171	169	175	177	179
MARICO LTD	Positive	594.1	587	581	570	604	615	621
MARUTI SUZUKI IN	Positive	12476.15	12311	12146	11889	12733	12990	13156
MAX FINANCIAL SE	Positive	937.35	928	917	908	947	956	967
MCX INDIA LTD	Positive	3647.3	3585	3522	3407	3763	3878	3941



# Intraday Trend, Supports and Resistance (Cash)

Scrip Name	Trend	Close	S1	S2	S3	R1	R2	R3
METROPOLIS HEALT	Neutral	1923	1905	1887	1865	1945	1967	1985
MRF LTD	Positive	127000	126166	125333	123966	128366	129733	130566
MUTHOOT FINANCE	Positive	1705.7	1679	1653	1609	1749	1793	1819
SAMVARDHANA MOTH	Neutral	149.45	146	142	136	157	164	168
MPHASIS LTD	Neutral	2289.95	2250	2209	2149	2351	2411	2451
NATIONAL ALUMIN	Positive	196.2	194	191	188	201	205	208
NAVIN FLUORINE I	Neutral	3303.4	3179	3053	2945	3412	3520	3646
NESTLE INDIA LTD	Neutral	2355.05	2341	2326	2302	2380	2404	2419
NMDC LTD	Positive	267.9	263	258	253	273	278	284
NTPC LTD	Positive	391.8	379	366	359	399	406	418
OBEROI REALTY	Positive	1883.95	1849	1813	1775	1923	1961	1997
OIL & NATURAL GA	Positive	284.1	275	268	262	289	294	302
ORACLE FINANCIAL	Positive	7563.3	7452	7341	7256	7648	7733	7844
PAGE INDUSTRIES	Neutral	36338.4	35892	35447	34993	36791	37245	37690
PERSISTENT SYS	Negative	3425.85	3364	3302	3228	3499	3573	3635
PETRONET LNG LTD	Positive	316.75	306	297	291	322	327	337
PI INDUSTRIES	Positive	3645.75	3580	3515	3465	3695	3745	3810
PIDILITE INDS	Positive	2984.6	2947	2911	2867	3027	3071	3107
PIRAMAL ENTERPRI	Positive	817.3	805	794	784	826	836	847
POLYCAB INDIA LT	Positive	6929.15	6812	6693	6541	7083	7235	7353
POWER FINANCE	Positive	554.8	531	506	492	570	584	609
POWER GRID CORP	Positive	337.65	325	314	302	348	360	372
PUNJAB NATL BANK	Positive	137	133	130	127	139	142	145
PVR INOX LTD	Positive	1328.4	1317	1305	1292	1342	1355	1367
RAMCO CEMENT/THE	Positive	773.35	760	745	733	786	797	812
RBL BANK LTD	Positive	261.25	255	248	242	268	274	282
REC LTD	Positive	604.5	580	555	541	619	633	659
RELIANCE INDS	Positive	3020.65	2949	2878	2838	3060	3100	3171
SBI CARDS & PAYM	Positive	705.2	698	693	687	710	715	721
SBI LIFE INSURAN	Positive	1391.5	1374	1356	1325	1423	1454	1472
SHREE CEMENT	Positive	25309.25	25057	24804	24520	25594	25878	26131

# Intraday Trend, Supports and Resistance (Cash)

Scrip Name	Trend	Close	S1	S2	S3	R1	R2	R3
SHRIRAM FINANCE	Positive	2509.15	2441	2372	2319	2563	2616	2684
SIEMENS LTD	Positive	7274	7159	7045	6952	7366	7459	7573
SRF LTD	Positive	2265.55	2230	2196	2175	2285	2306	2341
STATE BANK IND	Positive	905.65	870	836	815	925	946	981
STEEL AUTHORITY	Positive	166.35	164	161	159	169	171	174
SUN PHARMA INDU	Positive	1453.05	1436	1420	1389	1483	1514	1530
SUN TV NETWORK	Positive	672.6	657	642	629	685	698	713
SYNGENE INTERNAT	Neutral	665.9	658	650	638	677	690	697
TATA CHEMICALS	Positive	1060.85	1040	1020	1006	1074	1088	1109
TATA COMM	Positive	1775.25	1757	1737	1704	1809	1841	1861
TATA CONSULTANCY	Positive	3702.85	3682	3661	3627	3738	3773	3794
TATA CONSUMER PR	Positive	1069.15	1061	1052	1042	1081	1092	1100
TATA MOTORS LTD	Positive	950.45	935	920	906	964	978	993
TATA POWER CO	Positive	456.55	450	442	437	463	468	475
TATA STEEL LTD	Positive	174.25	171	167	165	177	179	183
TECH MAHINDRA LT	Positive	1245.35	1234	1223	1209	1259	1273	1285
TITAN CO LTD	Positive	3261.2	3229	3198	3146	3312	3364	3395
TORRENT PHARMA	Positive	2683	2659	2635	2600	2718	2753	2777
TRENT LTD	Positive	4662.2	4596	4530	4455	4738	4812	4879
TVS MOTOR CO LTD	Positive	2250	2219	2189	2171	2267	2285	2314
ULTRATECH CEMENT	Positive	10470.05	10284	10099	9981	10588	10705	10891
UNITED BREWERIES	Positive	1876.3	1858	1839	1821	1895	1913	1931
UNITED SPIRITS	Positive	1181.1	1171	1159	1151	1190	1197	1209
UPL LTD	Positive	528.15	517	507	500	534	541	551
VEDANTA LTD	Positive	457.85	450	441	430	470	481	489
VODAFONE IDEA LT	Positive	16	16	15	15	16	17	17
VOLTAS LTD	Positive	1406.3	1388	1369	1350	1426	1445	1464
WIPRO LTD	Positive	444.1	439	436	430	448	454	457
ZEE ENTERTAINMEN	Positive	156.3	152	147	143	160	165	169
ZYDUS LIFESCIENC	Positive	1032.25	1013	993	977	1049	1065	1085

Source: Bloomberg, ICICI Direct Research  
June 4, 2024

# Gladiators Stocks: Open Recommendations

Date	Scrip Name	CMP	Strategy	Recommendations Price	Target	Stoploss	Time Frame
3-Jun-24	Union Bank of India	170	Buy	160-167	189	149	3 Months
3-Jun-24	Petronet LNG	316	Buy	307-314	355	292	3 Months
23-May-24	JK Cement	4045	Buy	3860-3970	4445	3680	3 Months
22-May-24	Shyam Metals	622	Buy	630-650	735	590	3 Months
21-May-24	Sonacoms	660	Buy	615-635	720	585	3 Months
29-Apr-24	DCB Bank	132	Buy	138-140	160	127	3 Months
2-Apr-24	Reliance Industries	3027	Buy	2920-2958	3270	2730	3 Months

All the recommendations are in Cash segment

[Back to Top](#)

# Forthcoming Economic Event Calendar

Date	Event	Date	Event
<b>US</b>		<b>China</b>	
3-Jun	ISM Manufacturing	5-Jun	Caixin China PMI Services/Composite
5-Jun	S&P Global US Services/Composite PMI	17-Jun	Industrial Production YTD YoY
7-Jun	Change in Nonfarm Payrolls	9-Jun	New Yuan Loans CNY
12-Jun	FOMC Rate Decision (Upper/Low er Bound)	17-Jun	Retail Sales YTD YoY
18-Jun	Retail Sales Advance MoM	17-Jun	FX Net Settlement - Clients CNY
20-Jun	Initial Jobless Claims/Continuing claims	20-Jun	Sw ift Global Payments CNY
21-Jun	Existing Home Sales MoM	27-Jun	Industrial Profits YoY
26-Jun	MBA Mortgage Applications	30-Jun	Manufacturing PMI
27-Jun	GDP Annualized QoQ	30-Jun	Non-manufacturing PMI
28-Jun	PCE Deflator MoM	28-Jun	BoP Current Account Balance
<b>India</b>		<b>UK</b>	
4-Jun	Election Results	3-Jun	Markit UK PMI Manufacturing SA
5-Jun	Markit India PMI Services	5-Jun	Markit/CIPS UK Services PMI
5-Jun	Markit India PMI Composite	5-Jun	S&P Global/CIPS UK Composite PMI
7-Jun	RBI Policy	12-Jun	Monthly GDP (MoM)
12-Jun	CP/IIP YoY	12-Jun	Industrial Production YoY
14-Jun	Wholesale Prices YoY	21-Jun	Central Government NCR
14-Jun	Exports YoY	21-Jun	Markit/CIPS UK Services PMI
14-Jun	Imports YoY	21-Jun	Markit/CIPS UK Composite PMI
21-Jun	Bloomberg June India Economic Survey	28-Jun	Net Consumer Credit
28-Jun	Fiscal Deficit YTD INR Crore	28-Jun	GDP YoY
28-Jun	Eight Infrastructure Industries	28-Jun	Gross Fixed Capital Formation QoQ

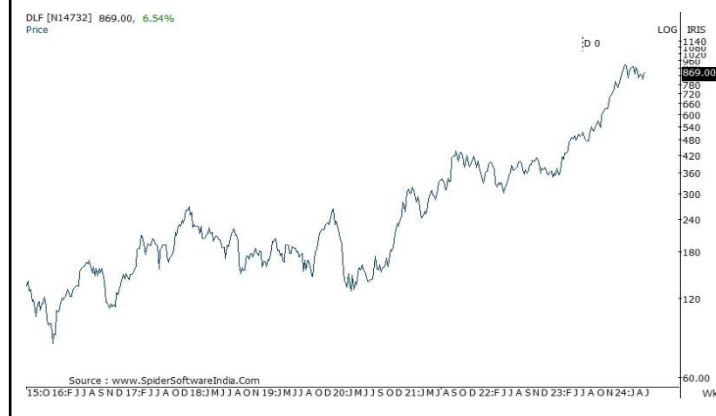
[Back to Top](#)

# Price history of last three years

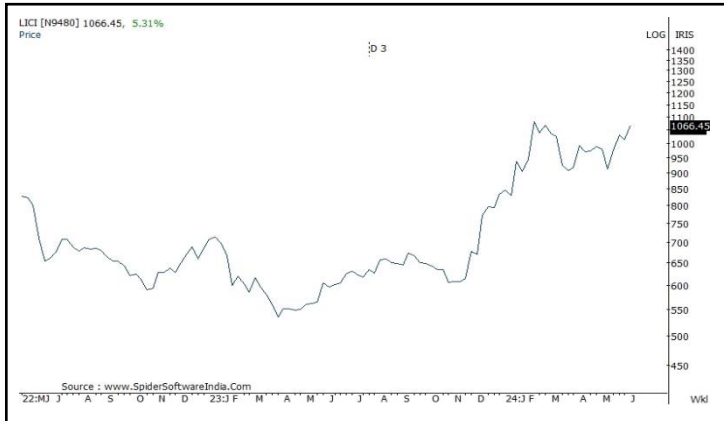
## Tata Power



## DLF



## LIC





- In case of intraday stock recommendations, execute the trade within +/- 0.25% of the recommended range provided in the report. The stock recommendation has to be executed after the first 5 minutes of trade and only up to 11:00 am. In case of Nifty future execute after the first 5 minutes of trade and up to 03:00 pm
- In case of positional recommendations, execute the recommendations in the range provided in the report
- Once the recommendation is executed, it is advisable to maintain strict stop loss as provided in the report. For positional recommendation maintain stop loss on daily closing basis
- We adopt a trading strategy of booking 50% profit when the position is in profit by 4-5% and trail stop loss on remaining position to the entry point (In case of positional stock recommendations)
- In case of intra day Nifty futures recommendation, once recommendation is activated, consider booking 50% profit near 1<sup>st</sup> Target (tolerance of 3 points) and trail stop loss to cost for remaining positions
- If the recommended intra day stock hits the target price before getting activated, then it is considered not initiated
- The Intra day recommendations are valid only for the day and should be squared off by 15:10 hrs. The positional recommendations are valid only for the prescribed period and are to be squared off at the end of mentioned period unless communicated otherwise through separate mail or on i-click to gain page
- Only stocks in derivatives segment have been considered for intra day recommendations
- Medium to long-term prospects of a stock does not have any bearing on the intra day view

## Trading portfolio allocation

- It is recommended to spread out the trading corpus in a proportionate manner between the various technical research products
- Please avoid allocating the entire trading corpus to a single stock or a single product segment
- Within each product segment it is advisable to allocate equal amount to each recommendation
- For example: The 'Momentum Pick' product carries 2 to 4 intraday recommendations. It is advisable to allocate equal amount to each recommendation

# Recommended product wise trading portfolio allocation

Product	Allocations		Number of Calls	Return Objective	Duration
	Product wise allocation	Max allocation In 1 Stock			
Momentum Picks- Intraday	10%	30-50%	2 Stocks	1-2%	Intraday
Momentum Picks- Positional	25%	8-10%	8-10 Per Month	5-8%	14 Days
Gladiator Stocks	35%	10-13%	Opportunity Based	15-20%	6 Months
Yearly Technical	25%	12-15%	7-9 Per Year	20-30%	1 Year
Cash	5%				
<hr/>					
	100%				

Candlestick patterns describe the market sentiment for the specified period. Some of the formations suggest reversal of sentiment (trend) and, therefore, are important for a chart reader. By themselves, the patterns do not carry any price target but only an indication of change in market behaviour. More importance needs to be given to the placement of the pattern within larger trend

**Morning Star:** Potential bottom reversal pattern made of three candle lines. The first sizeable black candle reflects a market in which the bears are in complete charge. The next candle line--the small real body--shows a slight diminution of the bearish force. The white candle that makes up the last part of the morning star visually displays the bulls are gaining the upper hand. Lowest low amongst three candles becomes technical support

**Bullish Engulfing Line:** A potential bottom reversal pattern. This pattern typically appears at the culmination of a decline or downtrend. The market falls, and a black candle forms (ideally a small black candle). Next, a white real body wraps around the prior session's black body. Low of the pattern becomes short term support for prices

**Piercing Line:** Potential bottom reversal pattern. A black body forms in the downtrend. The market continues moving south on the next session's open but that session culminates in a white real body that closes (e.g. pierces) than half way or more into the prior black body. Lowest low between two candles is referred to as technical support for prices

**Hammer:** A candlestick line which, during a downtrend, has a very long lower shadow and small real body (black or white) at the top end of the session's range. There should be no, or a very small, upper shadow. Pattern suggests buying support during declines and needs confirmation in terms of sustainability of prices above head of the Hammer in following session

**Evening Star:** Potential Top reversal pattern made of three candle lines. Comparable with a traffic signal. First white candle reflects a market in bullish trend. The next candle line--the small real body--warns waning momentum. The black candle that completes the evening star visually exhibits that prior up trend has stopped or reversed

**Bearish Engulfing Line:** Potential top reversal signal. This two candlestick pattern emerges during a rally. A black candle real body wraps around a white real body (classically a small white candle) Highest high between two candles becomes resistance level for prices for future reference

**Dark Cloud cover:** A dark cloud cover forms a top reversal pattern. The first session should be a strong, white real body. The second session's price opens over the prior session's high (or above the prior session's close). By the end of the second session, it closes near the low of the session and should fall well into the prior session's white body. Pattern suggests that market has a poor chance of rising immediately

**Shooting Star:** A single candlestick line during a rally in which there is a small real body (white or black) at the bottom end of the session's range and a very long upper shadow. The candle line should also have little or no lower shadow. Pattern suggest the trouble for prices overhead

**Continuation Patterns:** Other than widely known Candlestick reversal patterns discussed above, there are numerous patterns mentioned in literature on Candlestick which describe the continuation of existing sentiments i.e. bullish or bearish. We have refrained from mentioning names of these patterns to avoid confusion. However, the remark Continuation Pattern refers to bullish or bearish candlestick patterns which suggest continuation of existing trend



---

Pankaj Pandey

Head – Research

pankaj.pandey@icicisecurities.com

ICICI Direct Research Desk,  
ICICI Securities Limited,  
Third Floor, Brillanto House,  
Road No 13, MIDC,  
Andheri (East)  
Mumbai – 400 093  
research@icicidirect.com

# Disclaimer

We/I, Dharmesh Shah, Nitin Kunte, Ninad Tamhanekar, Vinayak Parmar, Research Analysts, authors and the names subscribed to this report, hereby certify that all of the views expressed in this research report accurately reflect our views about the subject issuer(s) or securities. We also certify that no part of our compensation was, is, or will be directly or indirectly related to the specific recommendation(s) or view(s) in this report. Analysts are not registered as research analysts by FINRA and are not associated persons of the ICICI Securities Inc. It is also confirmed that above mentioned Analysts of this report have not received any compensation from the companies mentioned in the report in the preceding twelve months and do not serve as an officer, director or employee of the companies mentioned in the report.

Terms & conditions and other disclosures:

ICICI Securities Limited (ICICI Securities) is a full-service, integrated investment banking and is, inter alia, engaged in the business of stock broking and distribution of financial products.

ICICI Securities is SEBI registered stock broker, merchant banker, investment adviser, portfolio manager and Research Analyst. ICICI Securities is registered with Insurance Regulatory Development Authority of India Limited (IRDAI) as a composite corporate agent and with PFRDA as a Point of Presence. ICICI Securities Limited Research Analyst SEBI Registration Number – INH000000990. ICICI Securities Limited SEBI Registration is INZ000183631 for stock broker. Registered Office Address: ICICI Venture House, Appasaheb Marathe Marg, Prabhadevi, Mumbai - 400 025. CIN: L67120MH1995PLC086241, Tel: (91 22) 6807 7100. ICICI Securities is a subsidiary of ICICI Bank which is India's largest private sector bank and has its various subsidiaries engaged in businesses of housing finance, asset management, life insurance, general insurance, venture capital fund management, etc. ("associates"), the details in respect of which are available on [www.icicibank.com](http://www.icicibank.com). Investments in securities market are subject to market risks. Read all the related documents carefully before investing.

Registration granted by SEBI and certification from NISM in no way guarantee performance of the intermediary or provide any assurance of returns to investors. None of the research recommendations promise or guarantee any assured, minimum or risk-free return to the investors.

Name of the Compliance officer (Research Analyst): Mr. Atul Agrawal

Contact number: 022-40701000 E-mail Address: [complianceofficer@icicisecurities.com](mailto:complianceofficer@icicisecurities.com)

For any queries or grievances: Mr. Prabodh Avadhoot Email address: [headservicequality@icicidirect.com](mailto:headservicequality@icicidirect.com) Contact Number: 18601231122

Recommendation in reports based on technical and derivative analysis centre on studying charts of a stock's price movement, outstanding positions, trading volume etc as opposed to focusing on a company's fundamentals and, as such, may not match with the recommendation in fundamental reports. Investors may visit [icicidirect.com](http://icicidirect.com) to view the Fundamental and Technical Research Reports. Our proprietary trading and investment businesses may make investment decisions that are inconsistent with the recommendations expressed herein.

ICICI Securities Limited has two independent equity research groups: Institutional Research and Retail Research. This report has been prepared by the Retail Research. The views and opinions expressed in this document may or may not match or may be contrary with the views, estimates, rating, target price of the Institutional Research.

The information and opinions in this report have been prepared by ICICI Securities and are subject to change without any notice. The report and information contained herein is strictly confidential and meant solely for the selected recipient and may not be altered in any way, transmitted to, copied or distributed, in part or in whole, to any other person or to the media or reproduced in any form, without prior written consent of ICICI Securities. While we would endeavour to update the information herein on a reasonable basis, ICICI Securities is under no obligation to update or keep the information current. Also, there may be regulatory, compliance or other reasons that may prevent ICICI Securities from doing so. Non-rated securities indicate that rating on a particular security has been suspended temporarily and such suspension is in compliance with applicable regulations and/or ICICI Securities policies, in circumstances where ICICI Securities might be acting in an advisory capacity to this company, or in certain other circumstances.

This report is based on information obtained from public sources and sources believed to be reliable, but no independent verification has been made nor is its accuracy or completeness guaranteed. This report and information herein is solely for informational purpose and shall not be used or considered as an offer document or solicitation of offer to buy or sell or subscribe for securities or other financial instruments. Though disseminated to all the customers simultaneously, not all customers may receive this report at the same time. ICICI Securities will not treat recipients as customers by virtue of their receiving this report. Nothing in this report constitutes investment, legal, accounting and tax advice or a representation that any investment or strategy is suitable or appropriate to your specific circumstances. The securities discussed and opinions expressed in this report may not be suitable for all investors, who must make their own investment decisions, based on their own investment objectives, financial positions and needs of specific recipient. This may not be taken in substitution for the exercise of independent judgment by any recipient. The recipient should independently evaluate the investment risks. The value and return on investment may vary because of changes in interest rates, foreign exchange rates or any other reason. ICICI Securities accepts no liabilities whatsoever for any loss or damage of any kind arising out of the use of this report. Past performance is not necessarily a guide to future performance. Investors are advised to see Risk Disclosure Document to understand the risks associated before investing in the securities markets. Actual results may differ materially from those set forth in projections. Forward-looking statements are not predictions and may be subject to change without notice.

ICICI Securities or its associates might have managed or co-managed public offering of securities for the subject company or might have been mandated by the subject company for any other assignment in the past twelve months.

ICICI Securities or its associates might have received any compensation from the companies mentioned in the report during the period preceding twelve months from the date of this report for services in respect of managing or co-managing public offerings, corporate finance, investment banking or merchant banking, brokerage services or other advisory service in a merger or specific transaction.

ICICI Securities or its associates might have received any compensation for products or services other than investment banking or merchant banking or brokerage services from the companies mentioned in the report in the past twelve months.

ICICI Securities encourages independence in research report preparation and strives to minimize conflict in preparation of research report. ICICI Securities or its associates or its analysts did not receive any compensation or other benefits from the companies mentioned in the report or third party in connection with preparation of the research report. Accordingly, neither ICICI Securities nor Research Analysts and their relatives have any material conflict of interest at the time of publication of this report.

Compensation of our Research Analysts is not based on any specific merchant banking, investment banking or brokerage service transactions. ICICI Securities or its subsidiaries collectively or Research Analysts or their relatives do not own 1% or more of the equity securities of the Company mentioned in the report as of the last day of the month preceding the publication of the research report.

Since associates of ICICI Securities and ICICI Securities as an entity are engaged in various financial service businesses, they might have financial interests or actual/beneficial ownership of one percent or more or other material conflict of interest various companies including the subject company/companies mentioned in this report.

ICICI Securities may have issued other reports that are inconsistent with and reach different conclusion from the information presented in this report. Neither the Research Analysts nor ICICI Securities have been engaged in market making activity for the companies mentioned in the report.

We submit that no material disciplinary action has been taken on ICICI Securities by any Regulatory Authority impacting Equity Research Analysis activities.

This report is not directed or intended for distribution to, or use by, any person or entity who is a citizen or resident of or located in any locality, state, country or other jurisdiction, where such distribution, publication, availability or use would be contrary to law, regulation or which would subject ICICI Securities and affiliates to any registration or licensing requirement within such jurisdiction. The securities described herein may or may not be eligible for sale in all jurisdictions or to certain category of investors. Persons in whose possession this document may come are required to inform themselves of and to observe such restriction.